



**GMB**

THE SUCCESS OF THE EARTH IS OUR FUTURE.





## PHILOSOPHY

Through technological innovation  
and new product development,  
we will contribute to the international  
community as a one of a kind company  
in the automotive parts industry.

The GMB Group not only responds to social changes through continuous technological innovation, but also aims to be a company that continues to challenge the creation of new values for building a rich future society. In order to achieve that goal, we are based on the idea that "a company is its people", and we put emphasis on human resource development, and aim to be a sustainable global company that allows each employee to feel worthwhile and to work with the spirit of "Harmony", the company philosophy.







GMB is not just a parts manufacturer  
but a partner capable of solving  
the management challenges you face.



## QUALITY CONTROL

### Technical Expertise

#### Shaping the Future of Motorization

Through continuous technological innovation, we aim not only to respond to societal changes but also to create new value and contribute to building a prosperous future society.

### Adaptability

#### Broad Coverage with Small Batch Production of Various Products

At GMB, we supply OEM parts to major automobile manufacturers both domestically and internationally, covering everything from mass-produced passenger cars to luxury vehicles. We flexibly meet the needs of clients who wish to source high-quality parts while reducing costs.

### Quality Control

#### Concentrating Costs on Essential Areas while Maintaining Uniform Quality Control

At GMB, our flagship factory in Japan strictly adheres to quality control standards. We utilize the latest measuring instruments and analytical devices to conduct high-precision inspections and analyses, ensuring the accuracy of our products. The widespread adoption of our products by numerous automobile manufacturers is a testament to GMB's reliability and proven track record.

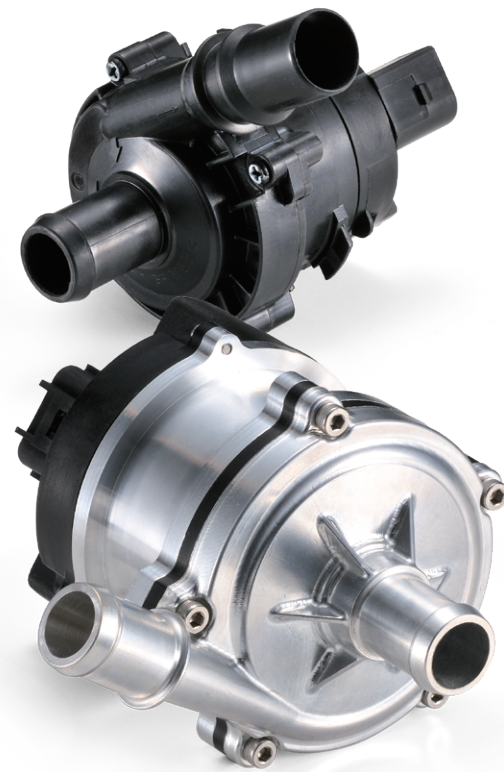




# PRODUCTS

## GREEN ENERGY PARTS

- Electric Water Pump (EWP) **OEM**
- Electric Oil Pump (EOP) **OEM**
- Integrated Thermal - management Module (ITM) **OEM**
- Valve Pump Module (VPM) **OEM**



## COOLING SYSTEM

- Water Pump **OEM**
- Oil Pump **OEM**
- Fan Clutch **OEM**
- Thermostat
- Antifreeze



## CHASSIS & AXLE PARTS

- Universal Joint **OEM**
- Steering Joint **OEM**
- Tripod Joint **OEM**
- CV Roller **OEM**
- Inner Race **OEM**
- Cage **OEM**
- CV Joint
- Suspension **OEM**
- Torque Rod Bush
- Wheel Bearing
- Wheel Bearing Kit





# TRANSMISSION PARTS

- Valve Spool **OEM**
- Valve Body **OEM**
- Pinion Shaft/Differential Pin **OEM**



# BEARING PARTS

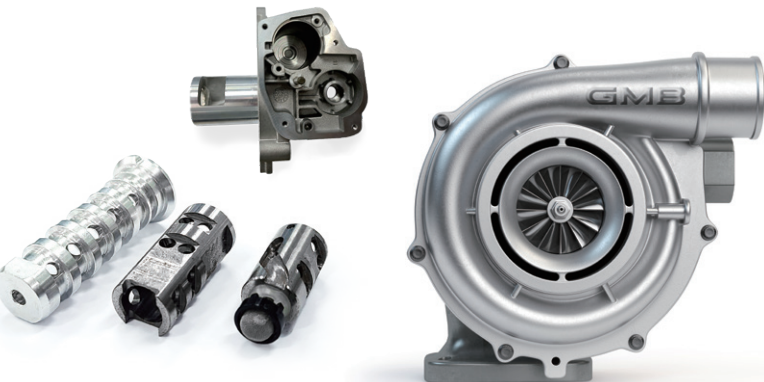
- Ball Bearing **OEM**
- Water Pump Bearing **OEM**
- Clutch Release Bearing **OEM**



# PRODUCTS

# ENGINE IMPROVEMENT SYSTEM

- Center Bolt & Control Valve **OEM**
- Socket **OEM**
- Turbo Charger Components **OEM**



# ENGINE DRIVE SYSTEM

- Tensioner **OEM**
- Idler & Pulley **OEM**
- Timing Belt Tensioner (TBT) **OEM**
- Accessory Drive Tensioner (ADT) **OEM**
- Hydraulic Auto Tensioner (HAT) **OEM**
- Overrunning Alternator Pulley (OAP)
- Timing Belt Kit
- Timing Chain Kit
- Belt (Timing Belt, Accessory Belt)



# FUEL DELIVER SYSTEM

- Fuel Pump



# ACCESSORY PARTS

- Filters
- Engine Oil, Transmission Oil, Brake Oil
- Battery





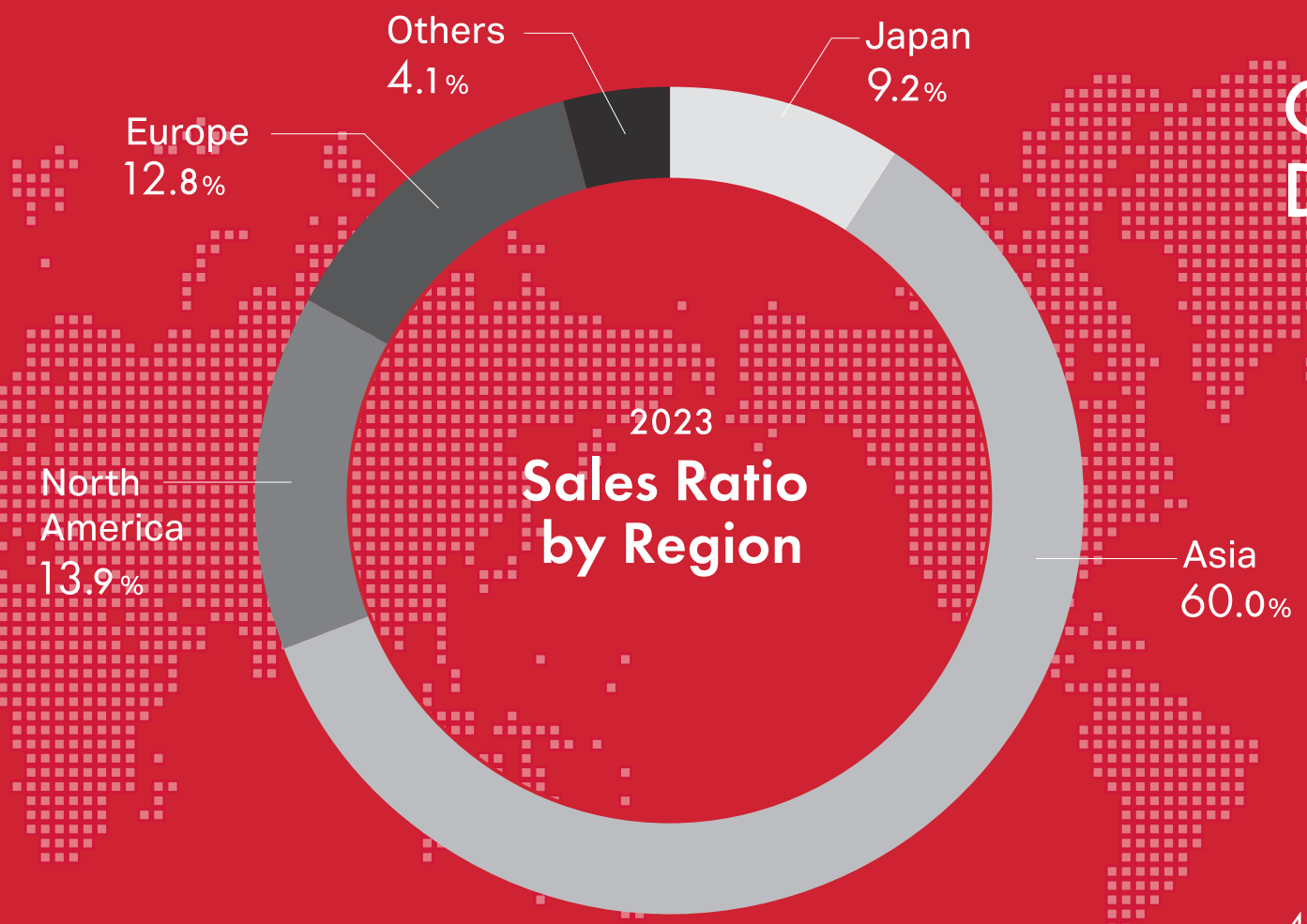
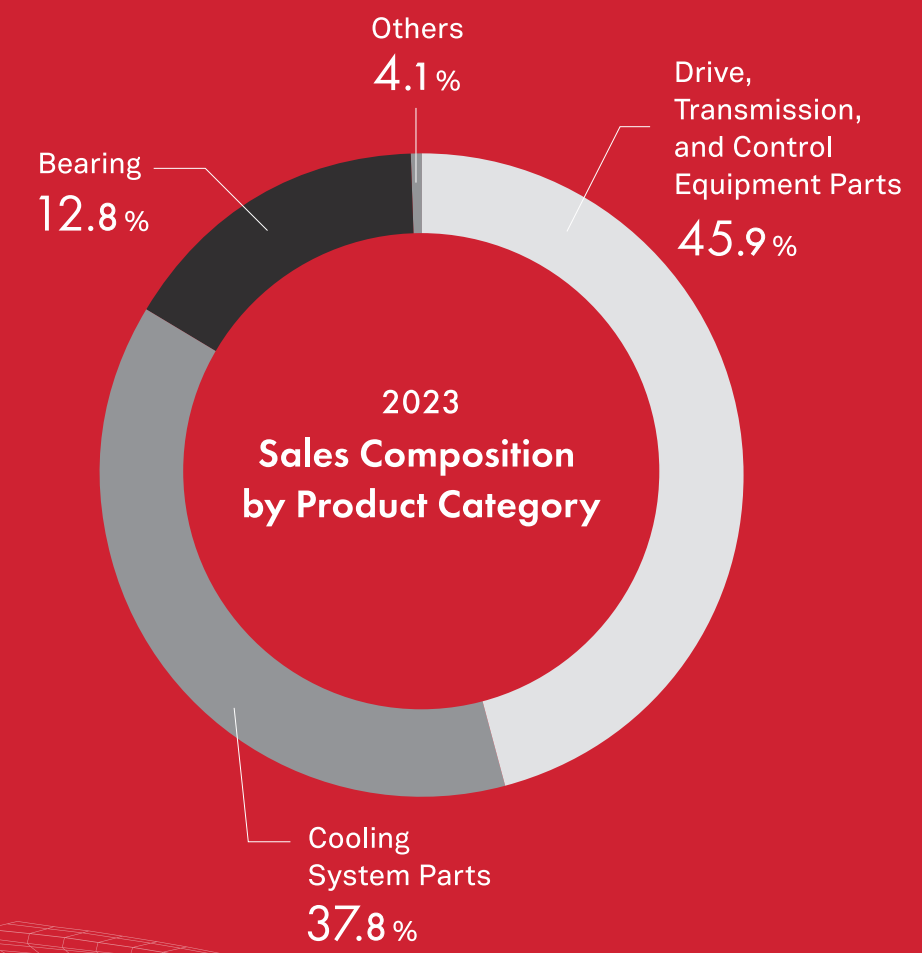
# CORPORATE DATA

# 663 Mil.USD

For After Market  
25.9%

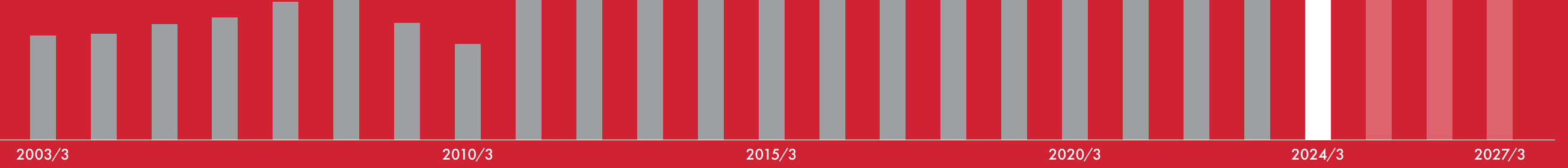
2023  
Sales Revenue

For OEM Market  
74.1%



## Consolidated Sales Trend

(Unit: million USD)





# GLOBAL NETWORK

We strive to be a sustainable global company that is admired around the world.

659  
CUSTOMERS

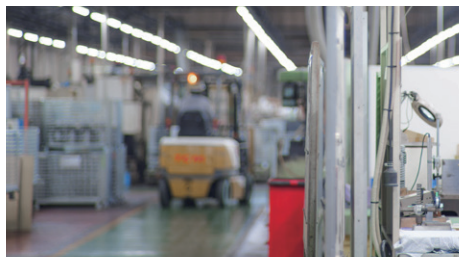
## JAPAN / ASIA



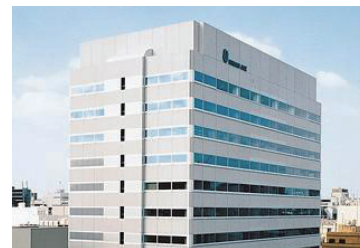
### JAPAN



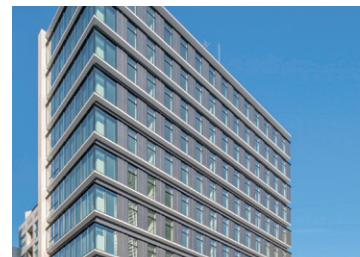
**Nara Head Office & Plant**  
150-3 Handa, Kawanishi-cho, Shiki-gun, Nara



**Yao Office & Plant**  
4-36-3 Kusune-cho, Yao-shi, Osaka



**GMB Sales & Marketing Office**  
Urban Ace Kitahama Bld. 12F 2-3-7, Hiranomachi, Chuo-ku, Osaka



**Yodoyabashi Office**  
Yodoyabashi PREX 11F 2-4-911, Hiranomachi, Chuo-ku, Osaka

## AMERICA



**USA**  
**GMB NORTH AMERICA Inc.**  
New Jersey HQ : 100 Herrod Blvd, Dayton NJ08810 USA  
California Office : 22310 S. Bonita street, Carson, CA 90745, USA



**USA**  
**GMB USA Inc.**  
29725 Hudson Dr Novi, MI 48377 USA

## EUROPE



**ROMANIA**  
**GMB ROMANIA AUTO INDUSTRY S.R.L.**  
Dacia St., No 2, Oarja, Arges, 117545, Romania

## OCEANIA



**AUSTRALIA**  
**GMB OCEANIA Pty. Ltd.**  
1 / 208 Walters Road, Arndell Park, NSW, Australia 2148



**KOREA**  
**GMB KOREA Corp.**  
618, Ungnam-ro, Seongsan-gu, Yangdeok-dong, MasanHoewon-gu, Changwon-si, Gyeongsangnam-do, Korea



**KOREA**  
**GMB ELPIS Corp.**  
Third floor of the one, Standard Factory, Masan Free Export Zone, Yangdeok-dong, MasanHoewon-gu, Changwon-si, Gyeongsangnam-do, Korea



**KOREA**  
**GMB Agtech Corp.**  
Fourth floor of the three, Standard Factory, Masan Free Export Zone, Yangdeok 2-dong, MasanHoewon-gu, Changwon-si, Gyeongsangnam-do, Korea



**CHINA**  
**QINGDAO GMB MACHINERY PRODUCT Co., Ltd.**  
No.3 Chiangsha Road Wangcheng Street Office, Laixi-city, Qingdao, Shandong Province, China



**CHINA**  
**QINGDAO GMB AUTOMOTIVE Co., Ltd.**  
Qingdao Northern Industrial Park Longquan-Township, Jimo-City, Qingdao-City, Shandong-Province, China



**CHINA**  
**HANGZHOU GMB AUTOMOTIVE CO.,LTD**  
China (Zhejiang) Free Trade Innovation Center No. 1666, Zhixing Road, Xiaoshan Economic and Technological Development Zone, Hangzhou City, Zhejiang Province



**CHINA**  
**QINGDAO GMB AUTOMOTIVE Co., Ltd.**  
D5 Bldg Qingfeng Rd, Su-Tong Science & Technology Park, Nantong City, Jiangsu Province, China



**THAILAND**  
**THAI GMB INDUSTRY Co., Ltd.**  
239 Moo 7, Tambol Tha Toom, Amphur Srimahaphote Prachinburi 25140 Thailand



**THAILAND**  
**THAI KYOWA GMB Co., Ltd.**  
304 Industrial Park, 410/1 Moo 7 Tambol Tha Toom, Amphur Srimahaphote Prachinburi 25140 Thailand



**RUSSIA**  
**GMB RUS AUTOMOTIVE LLC.**  
Leningradskaya oblast, Vsevolozhsky District, Bugrovskoye Rural Settlement, Village of Poroshkino, 23 km KAD Highway (Inner Ring), Building No.2 (RAUM Bugry Building No. A2), Russia

**INDIA**  
**GMB AUTOMOTIVE INDIACHENNAI PRIVATE LIMITED**  
Thiruvallur, Tamil Nadu 631402, Chennai City, India





# SUSTAINABILITY / ESG

To all whom it may concern,  
GMB promises perform its social corporate  
responsibility to the best of it's ability.



## ENVIRONMENTAL POLICY

In order to realize the management philosophy of the GMB to the customer with the first, through activities that provide products to the needs of all our customers, as well as to contribute to the society,we believe that important green naturally blessed Earth environmental conservation activities, duration the possible environmentally friendly manufacturing in all employees, we will be promoted.

## CSR MISSION

- Firstly GMB will fulfilll the market needs through our principal business as it carries out manufacturing activity with attention to global environment.
- Secondly GMB will perform its social corporate responsibility to all stake holders and will aim to be a socially responsible enterprise, so the market and community can have a happy relationship with GMB.

## CSR CORE CONCEPT

Based on Core Concept "Cenceptual;Truth","Ethical;Virtue","Aesthetic;Beauty"  
GMB works out CSR Mission by performing Intellect(Thinking),  
Decision(Judging) and Sense(Feeling).

## GOVENANCE RULE

GMB shall lead the affiliate companies and its employees by demonstrating the corporate governance basics deriving from "Compliance","Transparency",  
"Corporate moral" dealing with major issues influencing its business as the management intends to maximize the shareholder's interest in relationship with multiple stake holders like shareholders,society,customers,employees etc..

## ACCREDITATIONS

Quality management system is in place to  
comply with international standards among  
all GMB group companies.



TS 16949



ISO 9001



ISO 14001





In aiming to build a rich and prosperous future society, we continuously strive to create new value.

OUTLINE

Name	GMB CORPORATION
Established	May, 1962
Head Office	150-3 Handa, Kawanishichou, Shikigun, Nara
TEL	81-745-44-1911
URL	<a href="https://www.gmb.jp">https://www.gmb.jp</a>
Representative	Chief Executive Officer Yukichi Matsuoka
Capital	863,390 Thousands of yen
Account period	March
Number of Employees	351
Major Products	Manufacture and sale of automotive parts
	<b>[COOLING SYSTEMS]</b>
	•Mechanical Water Pump
	•Electronic Water Pump
	•Fan Clutch
	<b>[ENGINE DRIVE SYSTEMS]</b>
	•Tensioner & Idler Bearing
	•Timing Belt Kit
	<b>[TRANSMISSION PARTS]</b>
	•Valve Spool
	<b>[DRIVE LINE COMPONENTS]</b>
	•Universal Joint
	•CV Joint
	<b>[STEERING &amp; SUSPENSION PARTS]</b>
	•Ball Joint
	•Tie-Rod End
	•Rack End
	•Steering Joint
	<b>[AXLE PARTS]</b>
	•Wheel Bearing Parts
	•Single Ball Bearing
	•Clutch Release Bearing